
Welcome to Google Docs



We'll begin at 12:00 p.m.

1. Please enter your name in the chat and rate your Google Doc Knowledge from 4-1: I can teach it (4), Proficient (3), Somewhat proficient (2), Need to learn (1).
2. We will take attendance/survey at the end.
3. We will record the session for internal use.

Welcome to Google Docs

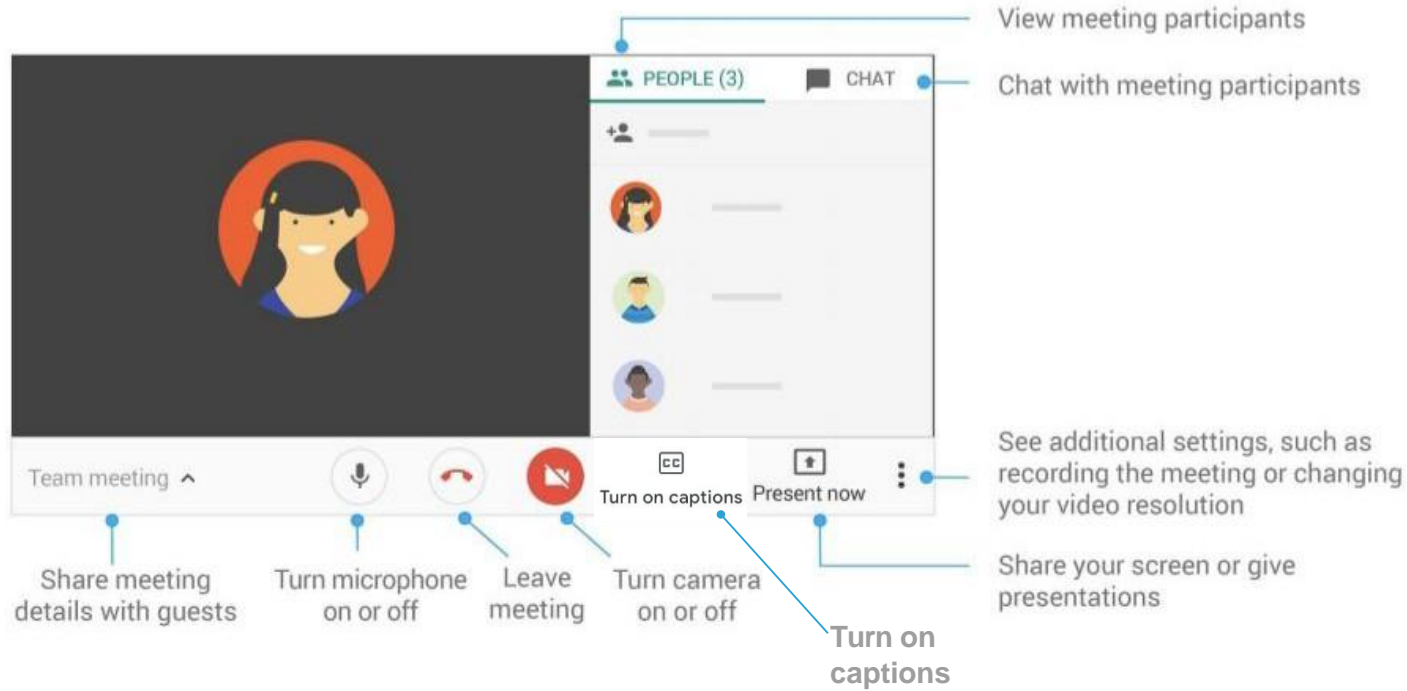


Support for Digital Pedagogy

Presenter:

Chat Moderators:

In-Meeting Controls



Basic Norms for Today's Webinar using Meets

- Mute your microphone
- Turn off video (lagging)
- **Optional:** turn on captioning
- Post questions about the content that is being presented in the chat
- Ignore the **Present now** button
- Complete the survey to receive credit for attending



Shifting to Digital Pedagogy



Context:

- Over 2900 attendees in over 60 webinars!
- Live webinars archived and available through myPD, also posted on the Teacher Communication website.
- Transition from **digital tools support** to **digital pedagogy support**.

Shifting to Digital Pedagogy



Context:

- Over 2900 attendees in over 60 webinars!
- Live webinars archived and available through myPD, also posted on the Teacher Communication website.
- Transition from **digital tools support** to **digital pedagogy support**.

Shifting to Digital Pedagogy

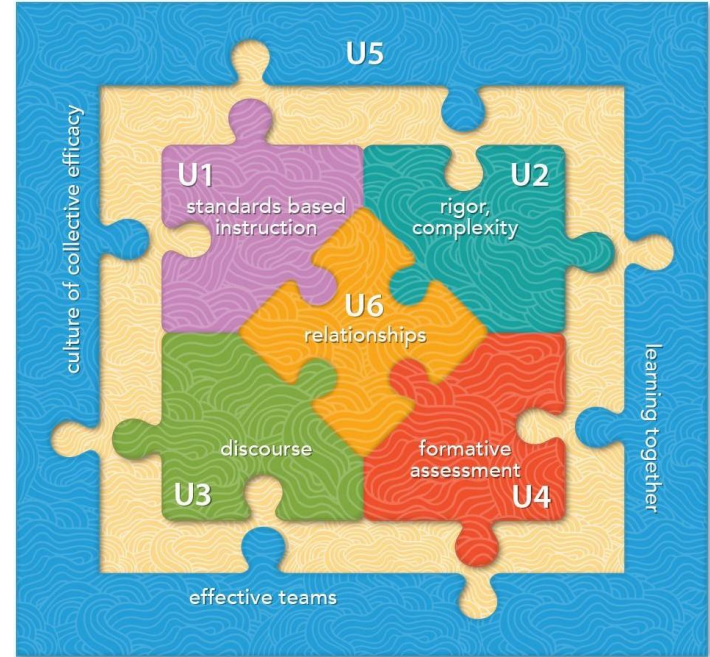


Purpose:

- We are building our own common language and practices to support content area teachers in digital pedagogies:
 - Identify key instructional moves
 - Use G Suite to support those instructional moves
 - Discuss innovative ways to help build our system's capacity

Common Pedagogy

- Introduce Concepts
- Relevant/Complex Tasks and Making Meaning
- Collaboration, Connections, and Conversations
- Checking for Understanding
- Feedback
- Closure



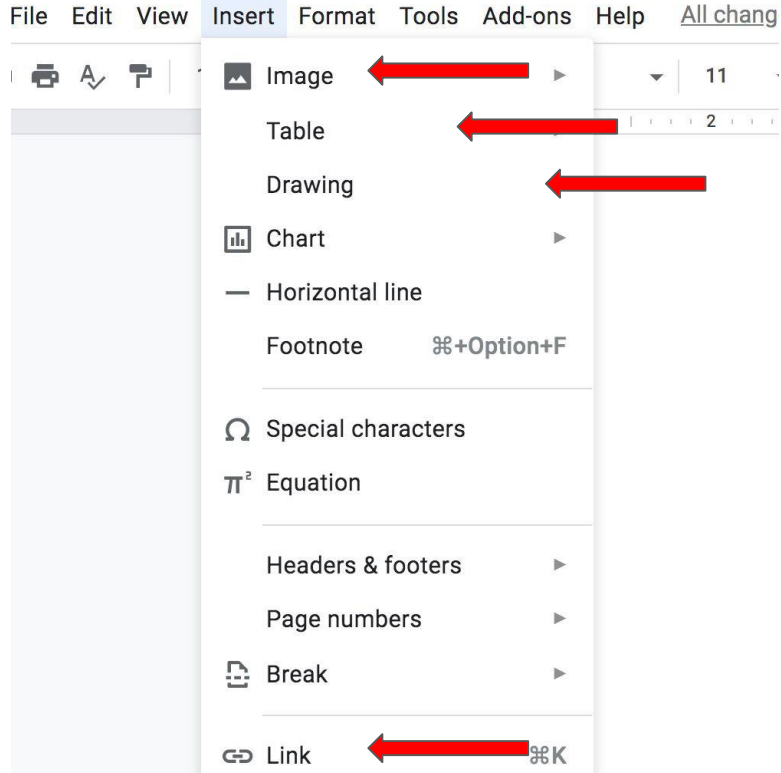
Success Criteria: Google Docs



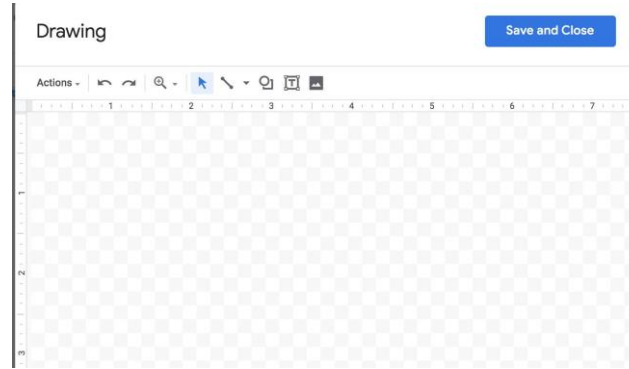
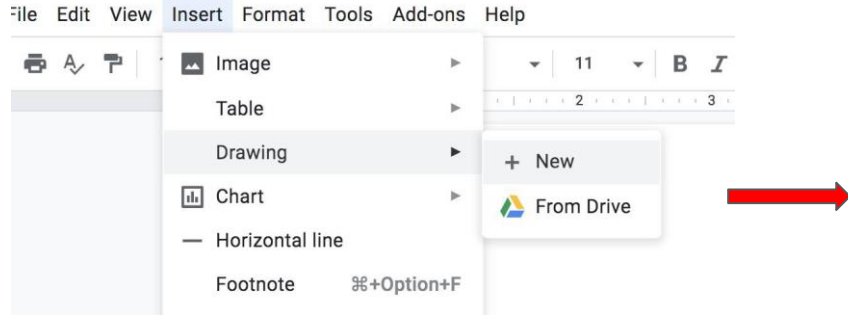
Participants will be shown.....

- The tools that are available in Google Docs
- How to use tools in Google Docs for digital pedagogy

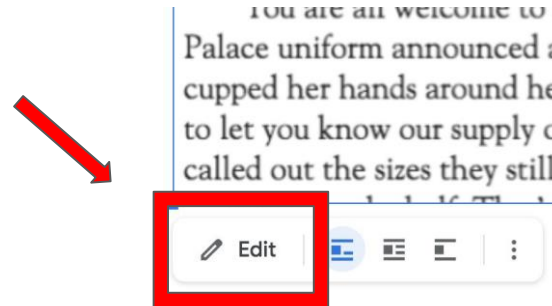
Tools: Insert Menu - link, table, drawing and or image



Tools: Drawing



When students or teachers want to edit the drawing, they click edit on the bottom left of the screen.



Tools: Comment Feature

The screenshot displays the Google Docs interface. The top menu bar includes File, Edit, View, Insert, Format, Tools, Add-ons, and Help. The 'Insert' menu is open, showing options such as Image, Table, Drawing, Chart, Horizontal line, Footnote (⌘+Option+F), Special characters, Equation (π²), Headers & footers, Page numbers, Break, Link (⌘K), and Comment (⌘+Option+M). A red arrow points to the 'Comment' option at the bottom of the menu. Another red arrow points to the '+' icon in the top toolbar, which is used to add new comments. The status bar at the top right indicates 'All changes saved in Drive'. A blue document icon is visible in the top right corner.

Tools: Translate



File Edit View Insert Format Tools Add-ons Help All changes saved in Drive

100% Normal

This is a test

- Spelling and grammar
- Word count ⌘+Shift+C
- Review suggested edits Ctrl+⌘O Ctrl+⌘U
- Compare documents
- 🌟 Explore ⌘+Option+Shift+I
- Linked objects
- Dictionary ⌘+Shift+Y
- Translate document ←
- 🎤 Voice typing ⌘+Shift+S
- ⌕ Script editor

Tools: Translate



→ Translated copy of Untitled document ☆ 📁

File Edit View Insert Format Tools Add-ons Help Last edit was

➤ 🖨️ A ✓ 📄 | 100% ▾ | Normal text ▾ | Arial ▾ | 11 ▾ |

..... 1 2 3 4

Esto es una prueba

Tools: Voice Typing



File Edit View Insert Format Tools Add-ons Help All changes saved in Drive

Normal 100% 1

English (US)

Spelling and grammar

Word count ⌘+Shift+C

Review suggested edits Ctrl+⌘O Ctrl+⌘U

Compare documents

Explore ⌘+Option+Shift+I

Linked objects

Dictionary ⌘+Shift+Y

Translate document

Voice typing ⌘+Shift+S

Script editor

Preferences

Accessibility settings

Activity dashboard

Student Name:	
Michelle	g because it
Wendy	
Brian	

Tools: Share



Share with others

Get shareable link 

Link sharing on [Learn more](#)

Anyone with the link can view ▾	Copy link
<code>https://docs.google.com/document/d/1_IEIJK9cci8RCB9LPITNSi6Ni8XeOF5DxRhC...</code>	

People

Enter names or email addresses...

Shared with Nicole Jackson, Amy Pendray, 10 other people, and 14 g

- ✓ Can edit
- Can comment
- Can view

Done

Most Common Use of

Google Docs



- Word processing

Pedagogy: Introduce a Topic, Check for Understanding, and Closure

Google Doc Tool: Insert a table



1. [Teacher post](#) a link, picture, text and or a question along with a table for students to answer.
2. [Hyperdocs](#)

Pedagogy: Introduce a Topic, Check for Understanding, and Closure

Google Doc Tool: Insert a Drawing- Drawing Tool



1. [WorkMat](#)
2. [Question](#)



Questions?

Shifting to Digital Pedagogy

Make Meaning of Text/Task



Annotating

- Use Format tools
 - Students can highlight, underlined, and annotate using the comment tool, on google doc assignment
 - PDF document with drawing
- Note Taking Sheet



Questions?

Shifting to Digital Pedagogy

Collaboration- Students working on the Same Google Doc



- Go to file>version history> see version history to show the history of the document.

← April 14, 2:48 PM Restore this version

50% Total: 35 edi

April 24th May 1st
Elementary Math office hours will use Google Meet. The 2-minute video created by the Ed Tech Office to support their Technology Training may be useful to understand how to use Google Meet along with the Q & A document. Video: [Technology Training Webinar Video](#)

Time	Friday 4/24	Monday 4/27	Tuesday 4/28	Wednesday 4/29	Thursday 4/30	Friday 5/1
1:00-2:00pm	Special time Mayday morning Elementary Math Think Central 8:00 - 9:00 - Think Central Primary Focus • Google Meet Link • Q/A Document Link	Elementary Math For K-6 Teachers/Admin 1:00 - 2:00 TR Support	Elementary Math K-6 For K-6 Teachers/Admin 1:00 - 2:00 • K-6 Google Meet Link • Q/A Link Suite Tools	Elementary Math K-6 For K-6 Teachers/Admin 1:00 - 2:00 • K-6 Google Meet Link • Q/A Link Suite Tools	Elementary Math K-6 For K-6 Teachers/Admin 1:00 - 2:00 • K Google Meet Link • Q/A Link • Gms. 1-2 Google Meet Link • Q/A Link	Special time Mayday morning Elementary Math Think Central 8:00 - 9:00 Think Central Primary Focus • Google Meet Link • Q/A Document Link
11:00 - 12:00	Think Central Gr 3-5 Focus 9:00 - 9:00 • Google Meet Link • Q/A Document Link	1:00 - 2:00 • K Google Meet Link • Q/A Link • Gms. 1K-2 Google Meet Link • Q/A Link • Gms. 3-5 Google Meet Link • Q/A Link	1:00 - 2:00 • K Google Meet Link • Q/A Link • Gms. 1-2 Google Meet Link • Q/A Link	1:00 - 2:00 • K Google Meet Link • Q/A Link • Gms. 1-2 Google Meet Link • Q/A Link	1:00 - 2:00 • K Google Meet Link • Q/A Link • Gms. 3-5 Google Meet Link • Q/A Link	11:00 - 12:00 Think Central Secondary Focus • Google Meet Link • Q/A Document Link

Only show named versions

FRIDAY

April 17, 7:38 PM
Current version
• Michelle Torres

WEDNESDAY

▶ April 15, 1:16 PM
• Lisa Dougan

TUESDAY


▶ April 14, 5:05 PM
• Lisa Dougan

▶ April 14, 2:48 PM
• Lisa Dougan

Collaboration- Peer Editing



- Share with comment only students can only make comments and not change work


Share with others Get shareable link 


Link sharing on [Learn more](#)

Anyone with the link can view ▼	Copy link
--	-----------

https://docs.google.com/document/d/1_IEIJK9cci8RCB9LPITNSi6Ni8XeOF5DxRhC...

People

Enter names or email addresses... 

Shared with Nicole Jackson, Amy Pendray, 10 other people, and 14 g... 

- Can edit
- Can comment**
- Can view

[Done](#)

Provide Feedback: Teacher to students



- Teacher adds a comment to student work.

The screenshot shows the Google Docs interface with the 'Tools' menu open. The 'Voice typing' option is highlighted with a red rectangular box. The menu items include: Spelling and grammar, Word count (⌘+Shift+C), Review suggested edits (Ctrl+⌘O Ctrl+⌘U), Compare documents, Explore (⌘+Option+Shift+I), Linked objects, Dictionary (⌘+Shift+Y), Translate document, Voice typing (⌘+Shift+S), Script editor, Preferences, Accessibility settings, and Activity dashboard. In the background, a table lists student names: Michelle, Wendy, and Brian.

Student Name:	
Michelle	g because it
Wendy	
Brian	

Provide Feedback : Students to students



- Share documents with peers and receive feedback from peers

Share with others Get shareable link

Link sharing on [Learn more](#)

Anyone with the link can view Copy link

https://docs.google.com/document/d/1_EIJk9cci8RCB9LPITNSi6Ni8XeOF5DxRhG/

People

Enter names or email addresses...

Shared with Nicole Jackson, Amy Pendray, 10 other people, and 14 g

- Can edit
- Can comment**
- Can view

[Done](#)



Questions?

Shifting to Digital Pedagogy

Additional Resources



- [Drawing Tool](#)
- [Hyperdocs Presentation](#)

Thank You!

Google Docs



Support for Digital Pedagogy

Please complete the form for attendance
(posted in the chat)

<https://bit.ly/2xuHw5L>